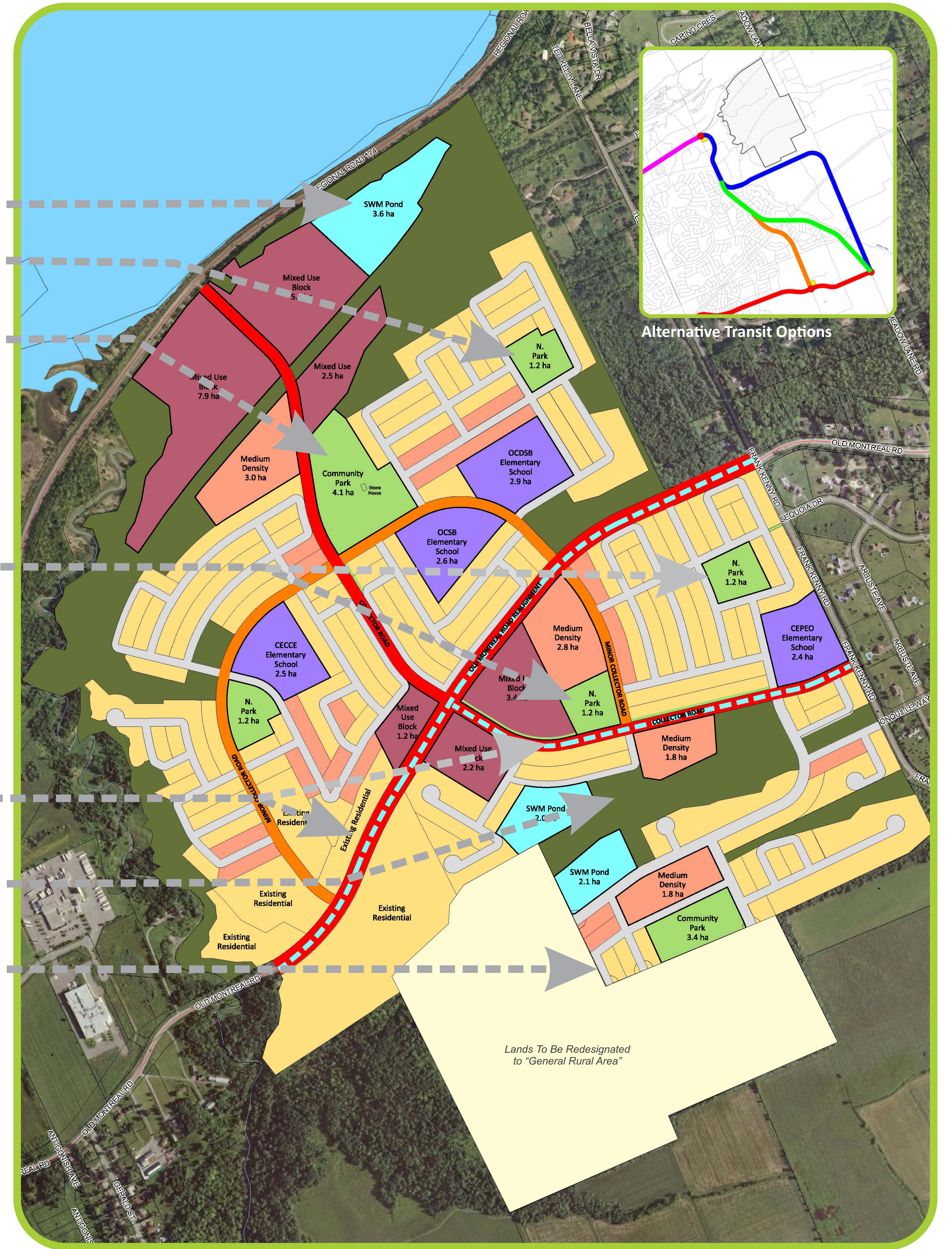


NOVEMBER 2012

Comparison

- Reduced Number of Stormwater Management Ponds (5 to 3)
- Minimum Park Size Increased to 1.2 ha.
- Adjustment to Community Park Configuration
- Re-location of Certain Medium Density Residential Uses and the Substitution of One Medium Density Block with a Mixed Use Area Block
- Neighbourhood Parks Re-located
- Adjustment to School Block Configurations
- Local Road Adjustments in Various Locations
- Two Transit Corridor Options Provided
- Enlargement of Urban Natural Features
- Deletion of Lands Outside of Proposed Urban Area Limits

- Legend
- Low Density Residential
 - Medium Density Residential
 - Mixed Use Blocks
 - Parks
 - Potential Future Transit Corridor
 - Schools
 - Stormwater Facilities
 - Open Space
 - Major Collector
 - Minor Collector



MARCH 2013

